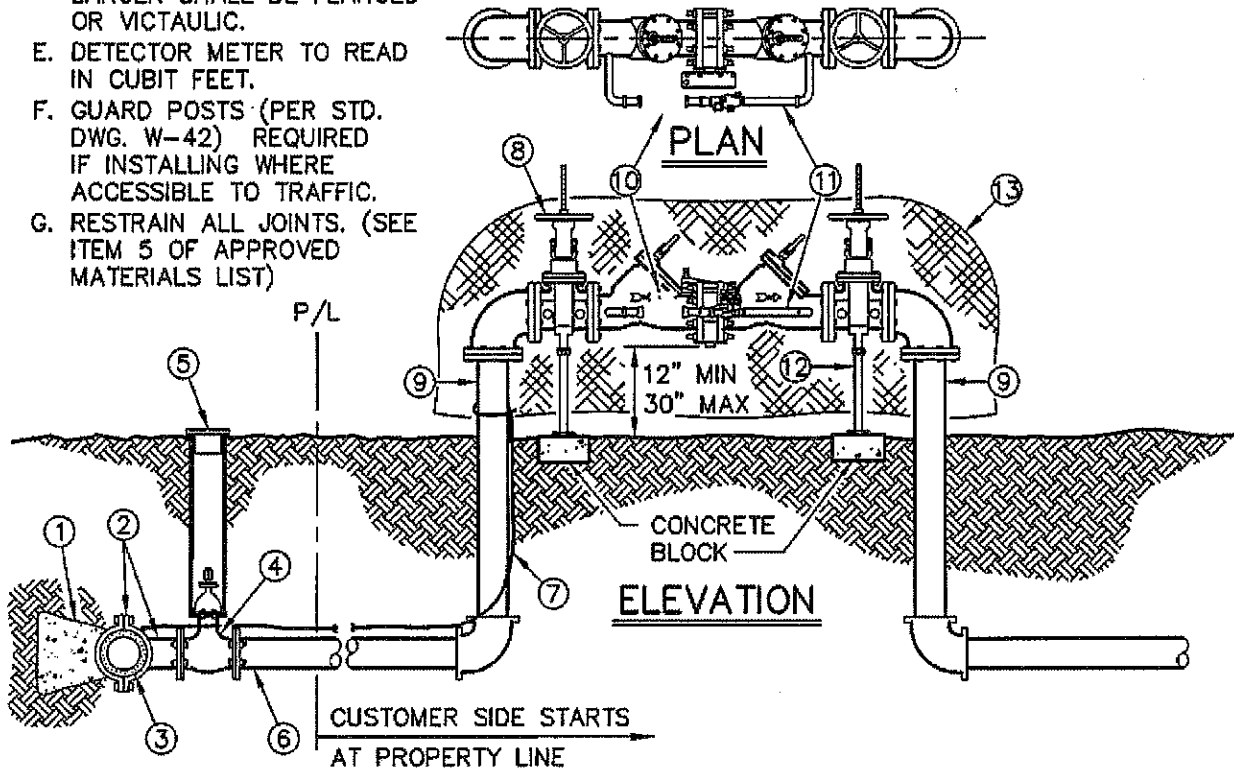


NOTES:

- A. REDUCED PRESSURE DETECTOR BACKFLOW ASSEMBLY SHALL BE INSTALLED IN A LOCATION APPROVED BY VWD AND THE FIRE DEPARTMENT HAVING JURISDICTION.
- B. REDUCED PRESSURE DETECTOR BACKFLOW ASSEMBLY SHALL BE INSTALLED HORIZONTAL AND PLUMB.
- C. ASSEMBLIES MUST BE USC & CDPH APPROVED.
- D. ALL ASSEMBLIES 2 1/2" AND LARGER SHALL BE FLANGED OR VICTAULIC.
- E. DETECTOR METER TO READ IN CUBIT FEET.
- F. GUARD POSTS (PER STD. DWG. W-42) REQUIRED IF INSTALLING WHERE ACCESSIBLE TO TRAFFIC.
- G. RESTRAIN ALL JOINTS. (SEE ITEM 5 OF APPROVED MATERIALS LIST)



ITEM	DESCRIPTION	APPROVED MATERIAL LIST NUMBER
1	THRUST BLOCK, AS REQUIRED	
2	TAPPING SLEEVE OR TEE	7-A
3	WATER MAIN	
4	RESILIENT WEDGE GATE VALVE (MIN. 6")	2-B
5	VALVE CAN & COVER PER STD. DWG. W-18	13-F,G,H
6	PIPE	1-A,B,C
7	LOCATING WIRE	10-A, 10-B
8	REDUCED PRESSURE DETECTOR ASSEMBLY	12-A
9	PIPE	1-C
10	3/4-INCH BY-PASS METER TO BE INSTALLED BY VWD	13-C
11	BY-PASS LINE ASSEMBLY WITH RP BACKFLOW	6-D
12	ADJUSTABLE PIPE SUPPORT (REQUIRED FOR 6" & LARGER)	13-D
13	INSULATING BAG	4-B

CITY OF VICTORVILLE - ENGINEERING DEPARTMENT			
REV.	DATE	BY	
			FIRE SERVICE - REDUCED PRESSURE DETECTOR ASSEMBLY
			W-28
1	8/20/08	STAFF	JOHN A. McGLADE, CITY ENGINEER
			SHEET 1 OF 1