

CENTER STREET PARK DEMONSTRATION GARDEN

PREPARED BY



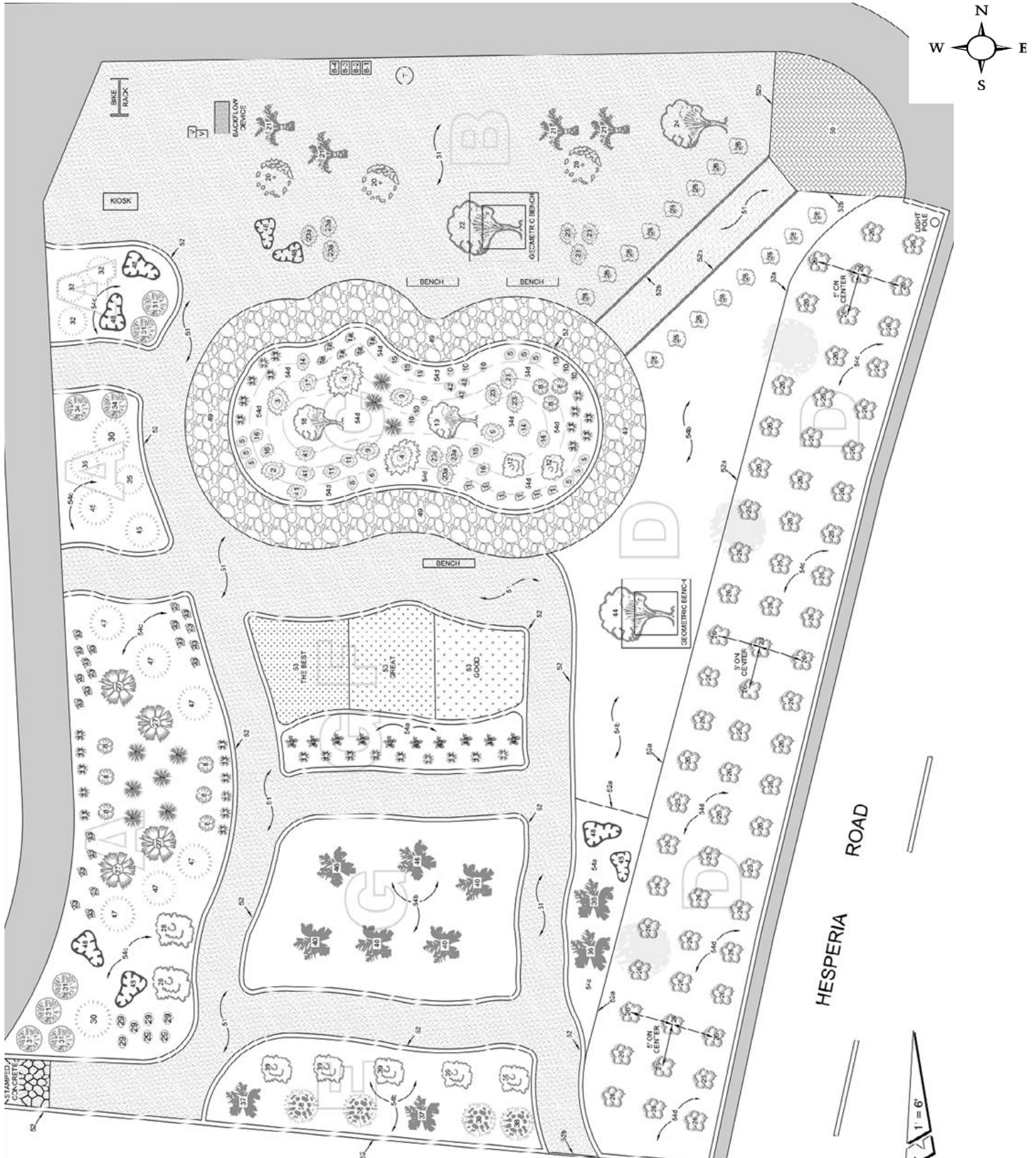
Donna McCormick
Water Conservation Supervisor
781.995.2118

COMMUNITY SERVICES DEPT
ANIMAL CONTROL / CONSERVATION / FACILITIES
LIBRARY / PARKS & REC / SOLID WASTE/RECYCLING



Erd Sohm
Maintenance Supervisor
780.243.1080

COMMUNITY SERVICES DEPT
ANIMAL CONTROL / CONSERVATION / FACILITIES
LIBRARY / PARKS & REC / SOLID WASTE/RECYCLING



Center Street Demonstration Garden Plant Legend

A1		GARDEN AREA-Sage-Ornamental Grass-Ground Cover		Planting Area SQ FT: 731 SQ FT			
PLANT DESCRIPTION							
TYPE	#	Common	Botanical	Qty	Tall/Wide	Spacing -ft	Water Needs
P	7	Little Bluestem	<i>Schizachyrium scoparium</i>	6	3 x 2	3	M
P	8	Blue Oat grass	<i>Helictotrichon Sempervirens</i>	6	2 x 2	2	M
SP	13	Blue Fescu -Elijah Blue	<i>Festuca glauca</i>	11	1 x 1	1	M
P	27	Pink Muhly Grass -Regal Mist	<i>Muhlenbergia capillaris</i>	4	3 x 4	3	M
P	28	Dusty Miller	<i>Senecio cineraria</i>	2	3 x 6	1	L-M
GCP	29	Damanita Daisy	<i>Chrysactimia Mexicana</i>	7	1 x 1	2	L-M
SP	30	Mexican Sage Bush	<i>Salvia leucantha</i>	2	3 x 4	2	M
S	31	Red Salvia	<i>Salvia greggii</i> / Autumn Sage	6	2 x 3	1.5	M
GCP	33	Verbena	<i>Glandularia gooddingii</i>	21	1 x 3	1	L
P	47	Russian Sage	<i>Perovskia atriplicifolia</i>	6	3 x 4	2	L
	48	Boulders 4' - 6'					
	51	Decomposed Granite					
	52	Mow Curb					
	54c	Bark Mulch 1" x 3" depth redwood bark					
	55	Stamped Concrete					
A2		GARDEN AREA-Sage		Planting Area SQ FT: 247 SQ FT			
PLANT DESCRIPTION							
TYPE	#	Common	Botanical	Qty	Tall/Wide	Spacing -ft	Water Needs
SP	30	Mexican Sage Bush	<i>Salvia leucantha</i>	2	3 x 4	2	M
S	34	Pink Salvia	<i>Salvia greggii pink</i>	2	2 x 3	2	M
S	35	White Sage-Calif Native	<i>Salvia Apiano</i>	2	2 x 3	1	L
SP	45	Jerusalem Sage	<i>Phlomis fruticosa</i>	2	4 x 4	4	M
	52	Mow Curb					
	54c	Bark Mulch 1" x 3" depth redwood bark					
A3		GARDEN AREA-Sage		Planting Area SQ FT: 188 SQ FT			
PLANT DESCRIPTION							
TYPE	#	Common	Botanical	Qty	Tall/Wide	Spacing -ft	Water Needs
S	31	Red Salvia	<i>Salvia greggii</i> / Autumn Sage	6	2 x 3	1.5	M
S	32	Blue Sage	<i>Salvia Clevelandi</i>	3	2 x 3	2	M
	48	Boulders 4' - 6'					
	51	Decomposed Granite					
	52	Mow Curb					
	54c	Bark Mulch 1" x 3" depth redwood bark					
B		GARDEN AREA-Succulents and CA Natives		Planting Area SQ FT: 1440 SQ FT			
PLANT DESCRIPTION							
TYPE	#	Common	Botanical	Qty	Tall/Wide	Spacing -ft	Water Needs
S	20	Desert Spoons	<i>Dasyllirion wheeleri</i>	3	6 x 5	6	L
S	21	Red Yucca	<i>Hesperaloe parviflora</i>	4	3 x 5	5	L
T	22	Palo Verde-hybrid Tree	<i>Parkinsonia 'Desert Museum'</i>	1	20 x 15	10	L
GCP	23	Penstemon-variety	<i>Eatonii Firecracker</i>	3	2 x 3	2	M
GCP	23a	Penstemon -hybrid beardtongue	<i>Margarita Bop- CA Native</i>	3	2 x 3	2	L
S	24	Desert Bird of Paradise	<i>Caesalpinia gilliesii</i>	1	6 x 6	6	M
S	25	Bush morning Glory	<i>Convolvulus cneorum</i>	8	2 x 3	3	L
	48	Boulders 4' - 6'					
	50	Interlocking pavers					
	51	Decomposed Granite					
	52b	Wood border -2x4 or triple wooden bender board (-curves)					

C GARDEN AREA-Perennial Flowers				Planting Area SQ FT: 774 SQ FT			
PLANT DESCRIPTION							
TYPE	#	Common	Botanical	Qty	Tall/Wide	Spacing -ft	Water Needs
GC	1	Thyme creeping -sleeps in winter	<i>Thymus serpyllum</i>	6	3" x 3	1	M
GC	1a	Woolly Thyme	<i>Thymus pseudolanuginosus</i>	6	3" x 3	1	M
P	2	Chocolate Flower	<i>Berlandiera lyrata</i>	1	1 x 2	1.5	M
SP	3	Spanish Lavender	<i>Lavandula stoechas</i>	1	4 x 3	3	M
SP	4	Scarlet Globe Mallow -orange	<i>Sphaeralcea coccinea</i> or <i>ambigua</i>	2	5 x 5	2	L
GC	5	Snow in summer	<i>Cerastium tomentosum</i>	9	1 x 1	2	M
P	6	Whirling Butterflies	<i>Gaura Lindheimeri</i>	2	1 x 2	3	M
P	7	Little Bluestem	<i>Schizachyrium scoparium</i>	3	3 x 2	3	M
P	8	Blue Oat grass	<i>Helictotrichon Sempervirens</i>	3	2 x 2	1.5	M
P	9	Cone flower	<i>Echinacea purpurea</i>	2	4 x 2	2	M
GCP	10	Angelita Daisy	<i>Tetranneuris acaulis</i>	9	1 x 1	1	L-M
SP	11	Hummingbird Mint	<i>Agastache rupestris</i>	2	3 x 2	2	M
GCS	12	Barberry -Crimson Pygmy	<i>Berberis thunbergii</i>	2	2 x 3	3	L
P	13	Blue Fescu -Elijah Blue	<i>Festuca glauca</i>	12	18" x 2'	1	M
P	14	Coreopsis	<i>Lanceolata</i>	3	2 x 2	2	M
P	15	Prairie Zinnia	<i>Zinnia grandiflora</i>	3	1 x 1	1.5	L-M
P	16	Yarrow -Ca Native	<i>Achillea millefolium</i> 'Rosea'	4	3 x 2	2	M
GCP	17	Yarrow -Wooly (White)	<i>achillea tomentosa</i>	1	3 x 2	2	M
TS	18	Crape Myrtle -Muskogee	<i>Lagerstroemia indica x fauriei</i>	1	20 x 10	15	M
TS	19	Crape -white	<i>Lagerstroemia indica</i> 'Whit III'	1	8 x 10	15	M
P	23	Penstemon Firecracker		3	2 x 3	2	L-M
P	23a	Penstemon -hybrid beardtongue	Margarita Bop- CA Native	3	2 x 3	2	L-M
p	41	Shasta Daisy	<i>Leucanthemum x superbum</i>	3	3 x 2	2	M
GC	42	Sun drops	<i>Calylophus</i> , Sundrops	3	1 x 1	1	M
	49	Flagstone grouted in					
	51	Decomposed Granite					
	52	Mow Curb					
	54d	Compost 3" depth					
D GARDEN AREA-Ground Covers for Slopes				Planting Area SQ FT: 2,467 SQ FT			
PLANT DESCRIPTION							
TYPE	#	Common	Botanical	Qty	Tall/Wide	Spacing -ft	Water Needs
S	25	Bush morning Glory	<i>Convolvulus cneorum</i>	8	2 x 3	3	L
GC	26	Blue Rug Juniper Creeping	<i>Juniperus Horizontalis</i> 'Wiltonii	32	6"	5' on center	L-M
GC	26	Blue Chip Juniper Creeping	<i>Juniperus Horizontalis</i> 'Wiltonii	32	12"	5' on center	L-M
S	36	Texas Ranger Sage-Rio Bravo	<i>Leucophyllum langmaniae</i>	2	5 x 5	3	L
TS	44	chaste tree Monks pepper tree	<i>Vitex agnus castus</i>	1	18' x 15'		M
	48	Boulders 4' - 6'					
	51	Decomposed granite tinted between pavers and flagstone					
	52	Mow Curb					
	52a	Plastic Landscape edging (bender board)					
	54a	Rubber Landscape Mulch Chips 3" depth Color: Brown					
	54b	1" x 3" depth Wood chips					
	54d	Compost 3" depth					

E GARDEN AREA-Plants for Privacy Hedge				Planting Area SQ FT: 306 SQ FT			
PLANT DESCRIPTION							
TYPE	#	Common	Botanical	Qty	Tall/Wide	Spacing -ft	Water Needs
S	37	Texas Ranger	<i>Leucophyllum frutescens</i>	2	6 x 6	8	L
P	38	Deer Grass	<i>Muhlenbergia rigens</i>	4	4 x 4 (2' flower)	7	M
S	39	Cotoneaster	<i>Cotoneaster boxifolia</i>	5	3' x 3'	4	M
	51	Decomposed granite					
	52	Mow Curb					
	54b	1" x 3" depth Wood chips					
F GARDEN AREA-Artificial Turf in Varying Qualities				Planting Area SQ FT: 396 SQ FT			
PLANT DESCRIPTION							
TYPE	#	Style Name	Eco Friendly & Realistic	Face Weight	Pile Height	Color	Water Needs
	53	The Best	Advanced Velvet Bent Grass Supreme	80 oz	2"	Blend	0
	53	Great	Advanced Velvet Bent Grass Deluxe	60 oz	1.75"	Blend	0
	53	Good	Advanced Sierra Ultra	50 oz	1.65"	Green & Dese	0
	51	Decomposed granite					
	52	Mow curb					
G GARDEN AREA-Small Shrubs				Combined Area: 1044 SQ FT			
PLANT DESCRIPTION				Planting Area SQ FT: 792 SQ FT			
TYPE	#	Common	Botanical	Qty	Tall/Wide	Spacing -ft	Water Needs
S	40	Apache Plume	<i>Fallugia paradoxa</i>	4	6 x 4	6	L
S	46	Pink Fairy Duster	<i>Callilandra</i>	2	3' x 6'	6	L
	52	Mow Curb					
	54b	1" x 3" depth Wood chips					
				Planting Area SQ FT: 252 SQ FT			
P	13	Blue Fescu -Elijah Blue	<i>Festuca glauca</i>	9	18" x 2'	1	M
S	43	Nadina Firepower - E	<i>Nandina domestica</i>	10	3 x 2	2	L-M
	52	Mow Curb					
	54a	Rubber Landscape Mulch Chips 3" depth Color: Brown					

Legend: S-shrub, P-perennial, GC- ground cover, T-Tree

L-Low water, M-medium, 0-no water