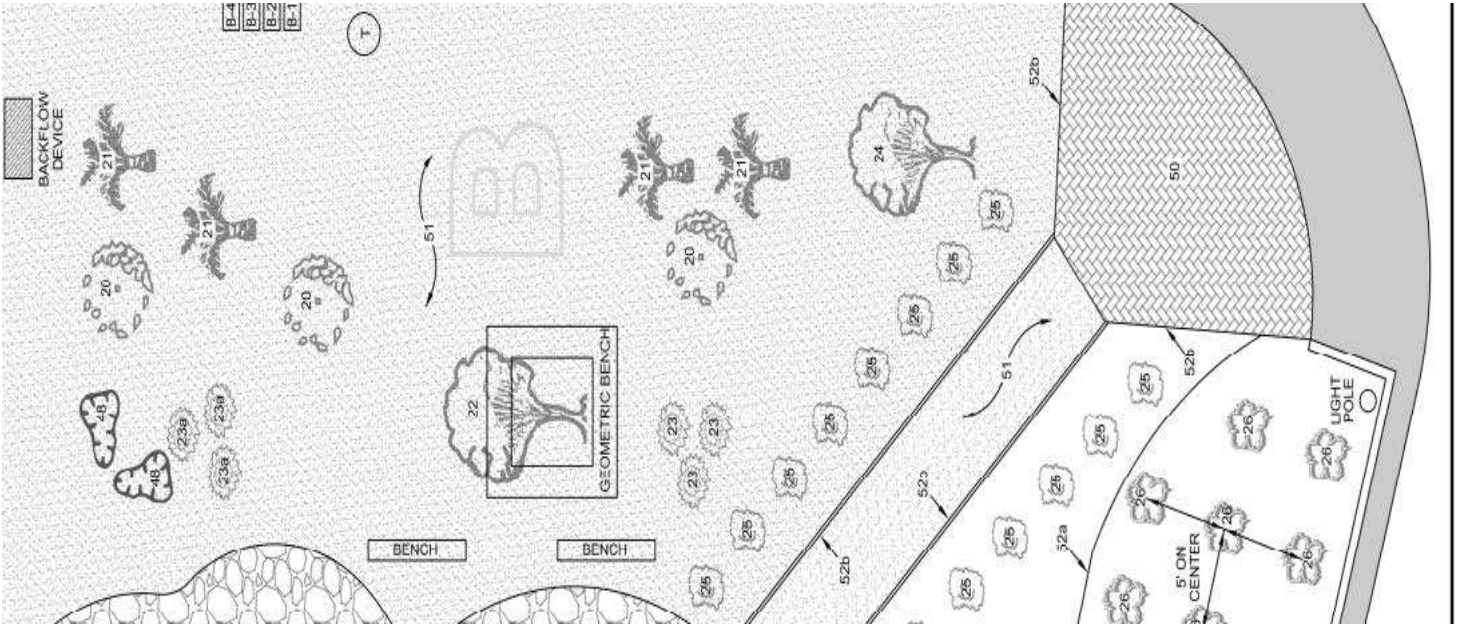
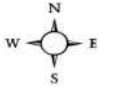


GARDEN AREA B



B GARDEN AREA-Succulents and CA Natives

Planting Area SQ FT: 1440 SQ FT

| PLANT DESCRIPTION | | | | | | | |
|-------------------|-----|--|-----------------------------|-----|-----------|-------------|-------------|
| TYPE | # | Common | Botanical | Qty | Tall/Wide | Spacing -ft | Water Needs |
| S | 20 | Desert Spoons | Dasyilirion wheeleri | 3 | 6 x 5 | 6 | L |
| S | 21 | Red Yucca | Hesperaloe parviflora | 4 | 3 x 5 | 5 | L |
| T | 22 | Palo Verde-hybrid Tree | Parkinsonia 'Desert Museum' | 1 | 20 x 15 | 10 | L |
| GCP | 23 | Penstemon-variety | Eatonii Firecracker | 3 | 2 x 3 | 2 | M |
| GCP | 23a | Penstemon -hybrid beardtongue | Margarita Bop- CA Native | 3 | 2 x 3 | 2 | L |
| S | 24 | Desert Bird of Paradise | Caesalpinia gilliesii | 1 | 6 x 6 | 6 | M |
| S | 25 | Bush morning Glory | Convolvulus cneorum | 8 | 2 x 3 | 3 | L |
| | 48 | Boulders 4' - 6' | | | | | |
| | 50 | Interlocking pavers | | | | | |
| | 51 | Decomposed Granite | | | | | |
| | 52b | Wood border -2x4 or triple wooden bender board (-curves) | | | | | |

Legend: S-shrub, P-perennial, GC-ground cover, T-Tree

L-low water, M-Medium Water, O-no water

Demonstration **Garden Area B** - Photo Sheet

| | | |
|--|--|---|
|  <p>20 Desert Spoon</p> |  <p>25 Bush Morning Glory</p> |  <p>25 Bush Morning Glory</p> |
|  <p>22 Palo Verde Tree</p> |  <p>22 Palo Verde Flowers</p> |  <p>23a Beardtongue Penstemon-</p> |
|  <p>23 Firecracker Penstemon</p> |  <p>24 Desert Bird of Paradise</p> |  <p>21 Red Yucca</p> |